

Release and Installation Notes

BEM 2K3 version 10.23.1

Document version 1: 27 December 2022.

Contents

BEM and Toolbox Updates	1
Changes in this release, 10.22.0 to 10.23.1	1
BEM, RRD & SERIES	2
• <i>UCI 2023 BMX Rule Changes</i>	2
• <i>AusCycling 2023 BMX Rule Changes</i>	2
• <i>TIME TRIAL – New Facilities</i>	2
• Race Number Allocation	3
Installation Procedure for the BEM 2K3 version 10.23.1 Package	4
Earlier Releases.	12
10.21.8 to 10.22.0	12
BEM	12
RRD	12
SERIES	12
10.21.5 to 10.21.8	12
BEM	12
RRD	13
SERIES	13
Operating System Requirements	14

BEM and Toolbox Updates

To avoid any incompatibility problems, enable all facilities and for Australian users to have event sanctioning compliance with 2022 AusCycling BMX rules, please install ensure the minimum versions you are running are BEM 10.23.1 and Toolbox 3.23.0.

Changes in this release, 10.22.0 to 10.23.1

27-Dec-22

Version 10.23.1 is a rule compliance update together with new features and bug fixes.

Synopsis:

- UCI BMX 2023 rules.
- AusCycling 2023 BMX rules.
- Time Trial expansion.
- Auto Race Number Allocation expansion.
- Bug fixes.

Details:

BEM, RRD & SERIES

- *UCI 2023 BMX Rule Changes*
Compliance update for the UCI BMX World Cup transfer changes applicable from 01.01.2023.
- *AusCycling 2023 BMX Rule Changes*
Compliance update for the AusCycling BMX Event Code sanctioning changes applicable from 01.01.2023.
- *TIME TRIAL – New Facilities*
In previous versions of BEM, the Time Trial provided for 1 or 2 runs (without a SuperFinal) with operator selection where there were two runs for either the best time or cumulative times to be used. With a SuperFinal there was 1 run only to qualify for the SuperFinal. With this update, a maximum of 3 Time Trial runs are possible or 2 Runs plus SuperFinal. Note that not all Class Codes allow for 3 Time Trial runs. E.g.
 - Under the Class Code “TT” a new Super Final Finals Code has been added, “SF-MAX” allowing the operator to specify the Maximum number of riders to qualify for the SuperFinal from the preceding 1 or 2 Time Trial runs.

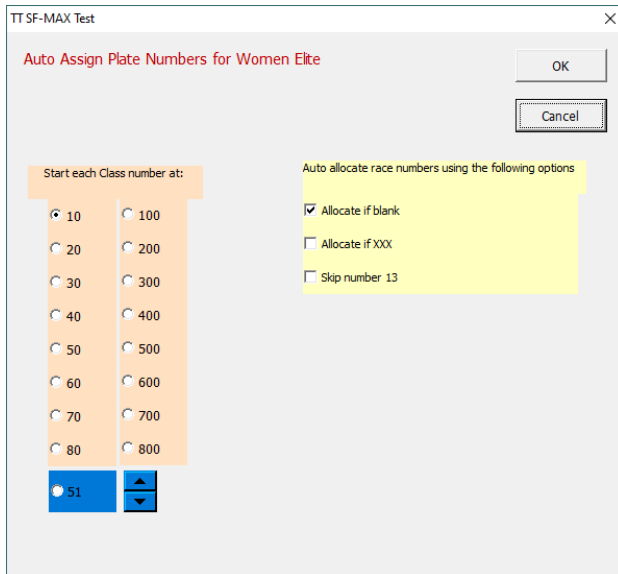
The settings available with Class Code of TT with the new Finals Code SF-MAX allow the following configuration:

- A SuperFinal will be drawn when the class meets the minimum riders for SuperFinal setting which has a range of 1 to 12. (Default of 12 per original UCI SuperFinal rules).
- The number of riders transferring to the SuperFinal will be from 1 to the maximum riders to transfer setting of 2 to 16. (Default of 5 per USA BMX requirement).
- The Finals Code of SF now allows for a lower number of riders to qualify for the SuperFinal as per the following table.

BEM Min_SuperFinal Setting	Number in Class	Number in Super Final
12 (UCI Rule Compliant)	Less than 12	0
	12 to 15	6
	16 to 23	8
	24 or more	16
1 to 11	Less than Min_SuperFinal	0
	1 to 2	1
	3 to 4	2
	5 to 8	4
	9 to 11	6
	12 or more as per UCI rule (above)	

- *Race Number Allocation*

The existing auto Race Number Allocation has been extended, allowing start numbers up to 999 to be allocated.



- For Class Code of TT, added selection of three start order options for the Time Trial runs matching those for MTB XCE.
- Added protective patch to avoid a debug stop should an error be returned from calls to Windows API dwMilliseconds.
- Update to the Riders by Country report to include the rider's UCI ID.
- Corrects a debug error when doing a rider search in Review Entries where none of the entries have data in the Last Name field.
- Corrects a debug error in Review Entries when clicking on Update Details when the First and Last Name fields are blank.
- Corrects a problem where Time Trial 2 was not always included in the race list reports.
- Correction to the building of the Race List when two Time Trial / Pump Track Qualification stages are specified.
Note that scoring was not impacted by the issue being corrected.
- Update to the Time Trial Start List (moto sheet) printed format to use heavier lines between each rider as some printers do not consistently print the faint lines in the previous print template.

Installation Procedure for the BEM 2K3 version 10.23.1 Package

Open the **2a BEM 10 Production 10-23-1.zip** file and save the **2a BEM 10 Production 10-23-1.msi** file in any convenient location.

Please do not proceed with the installation unless you have both your Registered User Code and the Upgrade Code applicable to this version.

Should you wish to purchase an upgrade to the BEM 11 series or have purchased an upgrade and do not have your User or Upgrade Codes, please contact lyndon.downing@bigpond.com

Any installed BEM version commencing with 10. or 3.10 MUST be removed via Control Panel, Programs and Features before installing this update.

Note that 10.x versions of BEM can co-exist with 11.x versions. Recommended action is that all earlier versions of BEM are removed once 10.23.1 is successfully installed and run to avoid inadvertently running earlier version that will not be compliant with the current UCI and local Association Regulations.


Removal Procedure

Note that screen shots may vary depending on the version of windows installed.

Click Start, Control Panel, Programs and Features (Add and Remove Programs in Windows XP)

Uninstall or change a program

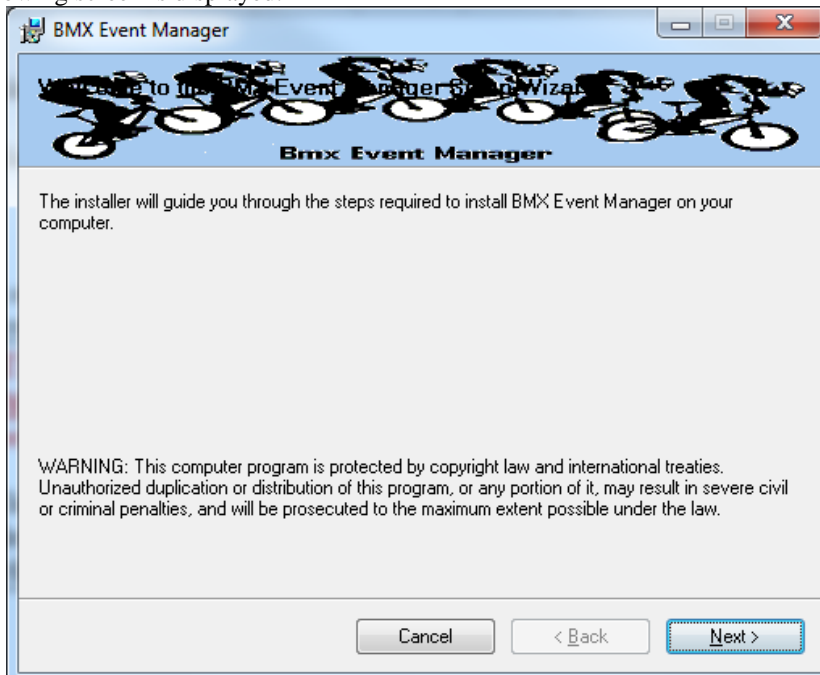
To uninstall a program, select it from the list and then click Uninstall, Change or Repair.

Organise ▾				
Name	Publisher	Installed On	Size	Version
 BMX Event Manager	Bemman	03/11/2021	32.0 MB	10.22.0

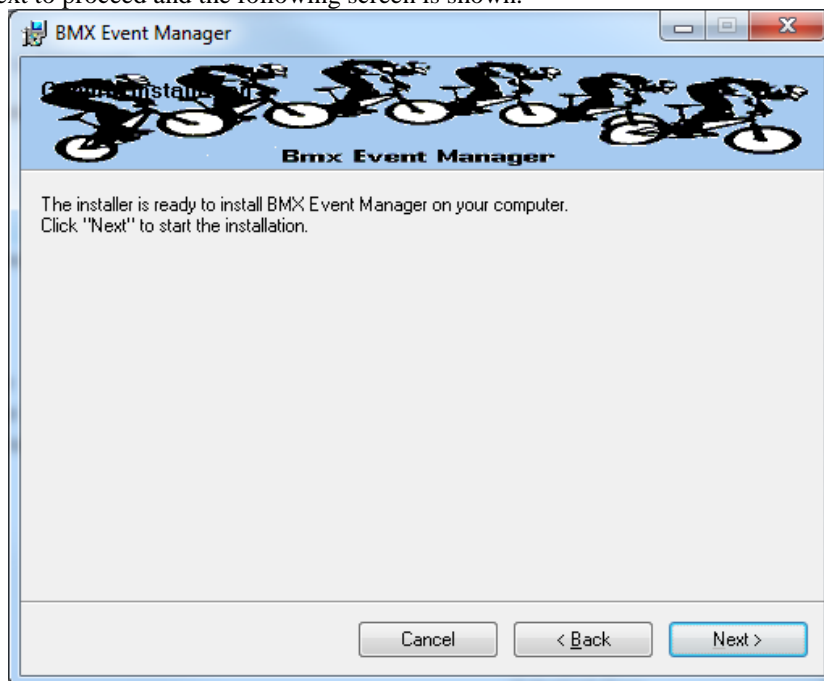
Right click on the selected Bem2K3 or BMX Event Manager then Left click on Uninstall. Answer Yes to any prompts required to complete the removal of the earlier version.

Double click on the **2a BEM 10 Production 10-23-1.msi** file saved earlier (see page 4) to start the installer.

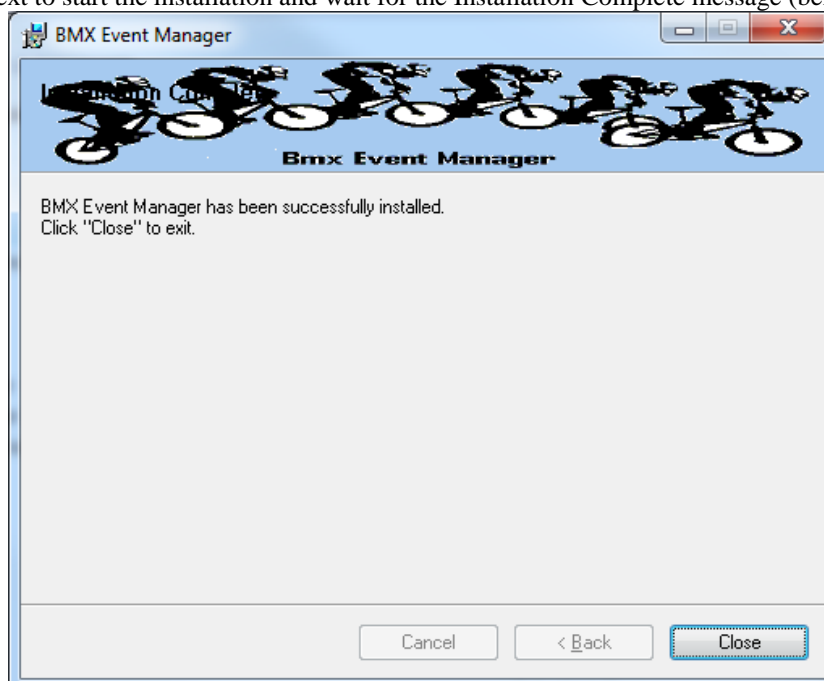
The following screen is displayed.



Click Next to proceed and the following screen is shown.



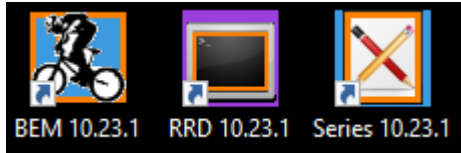
Click Next to start the installation and wait for the Installation Complete message (below).



Note that the installation is hardcoded into the folder structure:
C:\BEM\Programs\Event\3.10.x for BEM and Series programs
C:\BEM\Programs\Report\3.10.x for the RRD program.

If not done previously as per step 2.1 on page 16 of this document, Office 2007 and Office 2010 users should include the path C:\BEM\Programs in the Excel list of trusted locations.

The installation procedure installs the BEM, RRD and Series programs, adds the BMX Event Manager group in the Programs Menu and provides shortcuts on the Desktop.



Note: if the shortcuts are added but with default rather than the custom icons, please contact lyndon.downing@bigpond.com for assistance to resolve this issue.



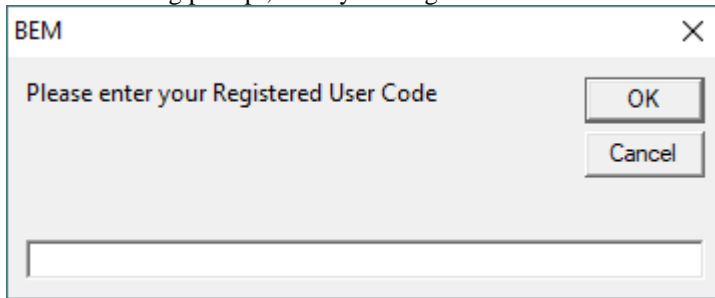
Double click on the BEM icon to start the program.
Note that the registration status at the top left of the screen will always show “Unlicensed Copy” before the language selection is made



Select the required language option then click OK

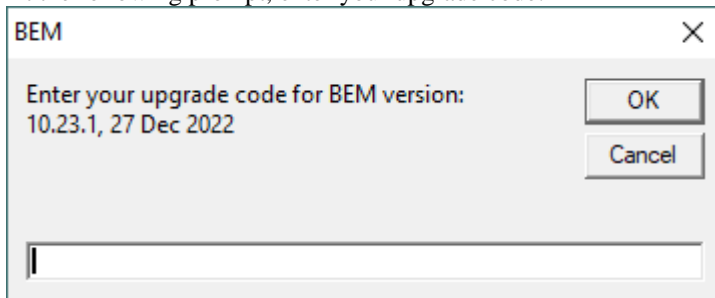
If you do not have a Registered User Code or Upgrade Code for this version then please contact lyndon.downing@bigpond.com

At the following prompt, enter your Registered User Code



A screenshot of a dialog box titled "BEM" with a close button (X) in the top right corner. The main text reads "Please enter your Registered User Code". To the right of the text are two buttons: "OK" and "Cancel". Below the text is a single-line text input field.

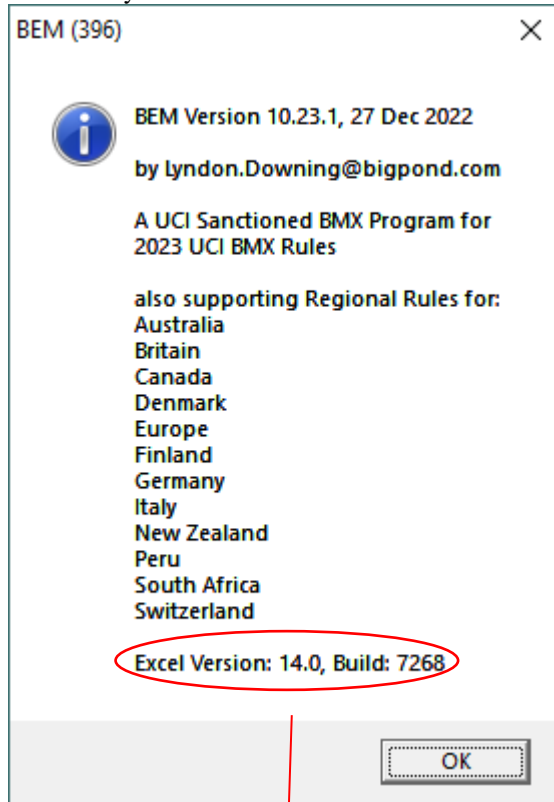
At the following prompt, enter your upgrade code:



A screenshot of a dialog box titled "BEM" with a close button (X) in the top right corner. The main text reads "Enter your upgrade code for BEM version: 10.23.1, 27 Dec 2022". To the right of the text are two buttons: "OK" and "Cancel". Below the text is a single-line text input field.

The BEM version and your PC's Excel version and build details will then be shown.

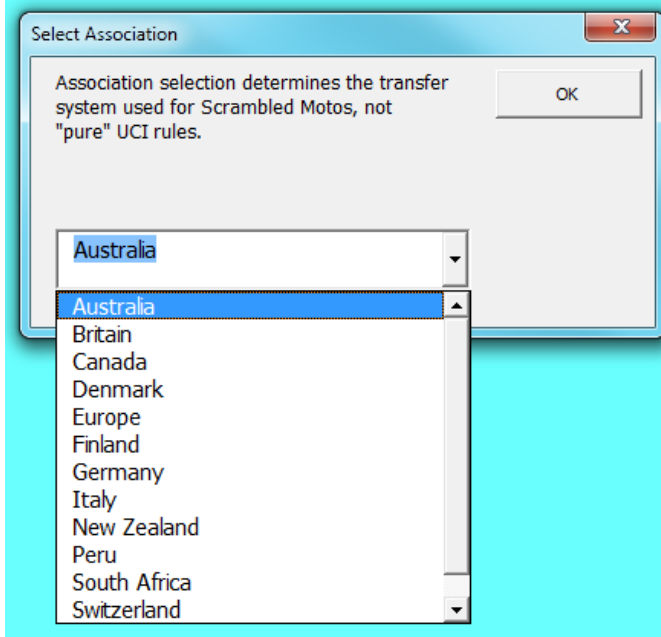
Check that your BEM version and date is as shown below.



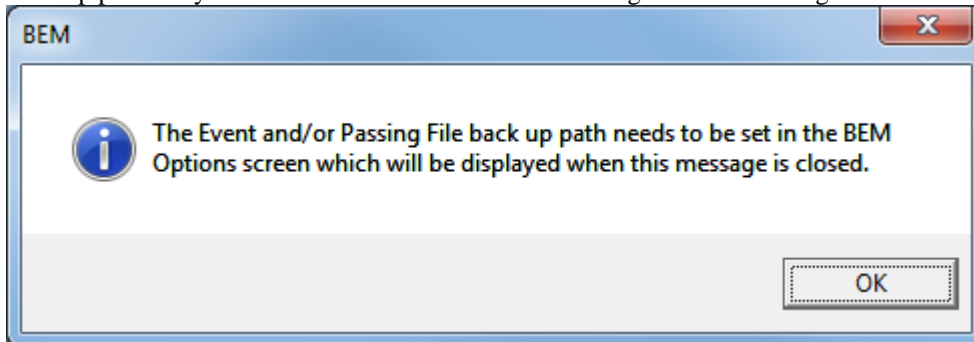
The banner also includes the Excel version and Build numbers running on your computer as a quick check that you have the latest Microsoft Office updates installed. If you do not have versions at least matching the following, there is a good chance that your version of Excel is not up to date and may result in unpredictable operation of the BEM program.

Version	Build	Comment
11.0	8404	Excel 2003, Service Pack 3+
12.0	6762	Excel 2007, Service Pack 2+
14.0	7268	Excel 2010, Service Pack 1+

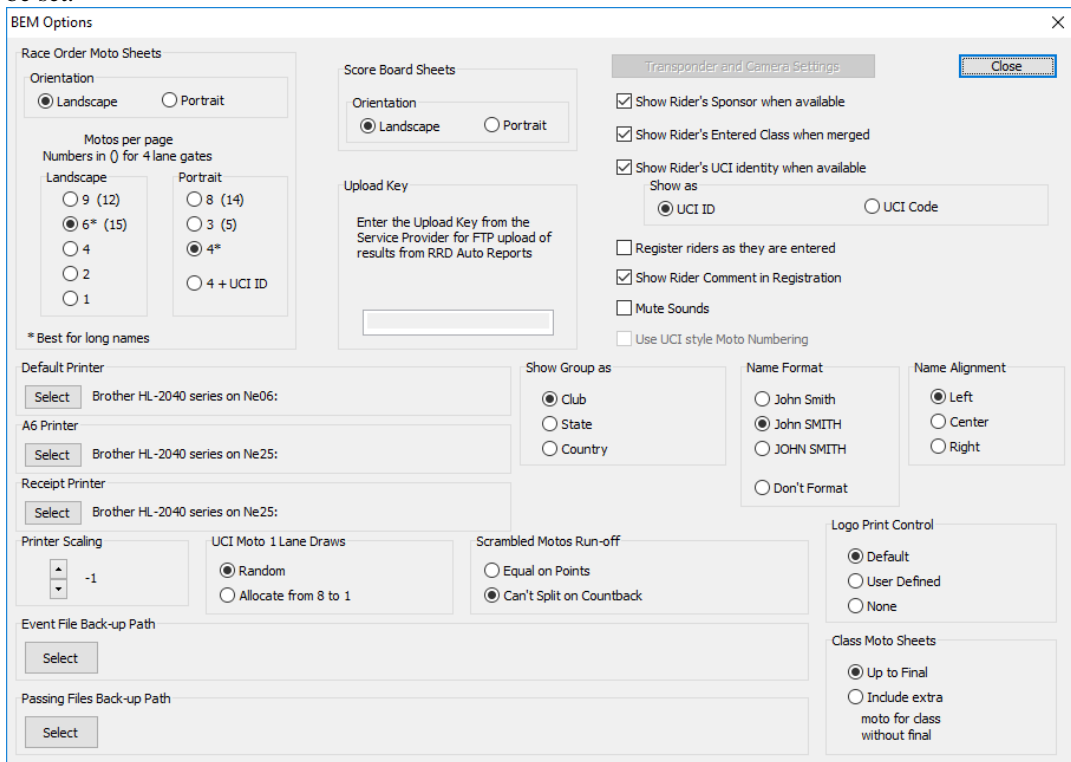
Select the appropriate Association / Region or UCI if used for other than the listed Associations.



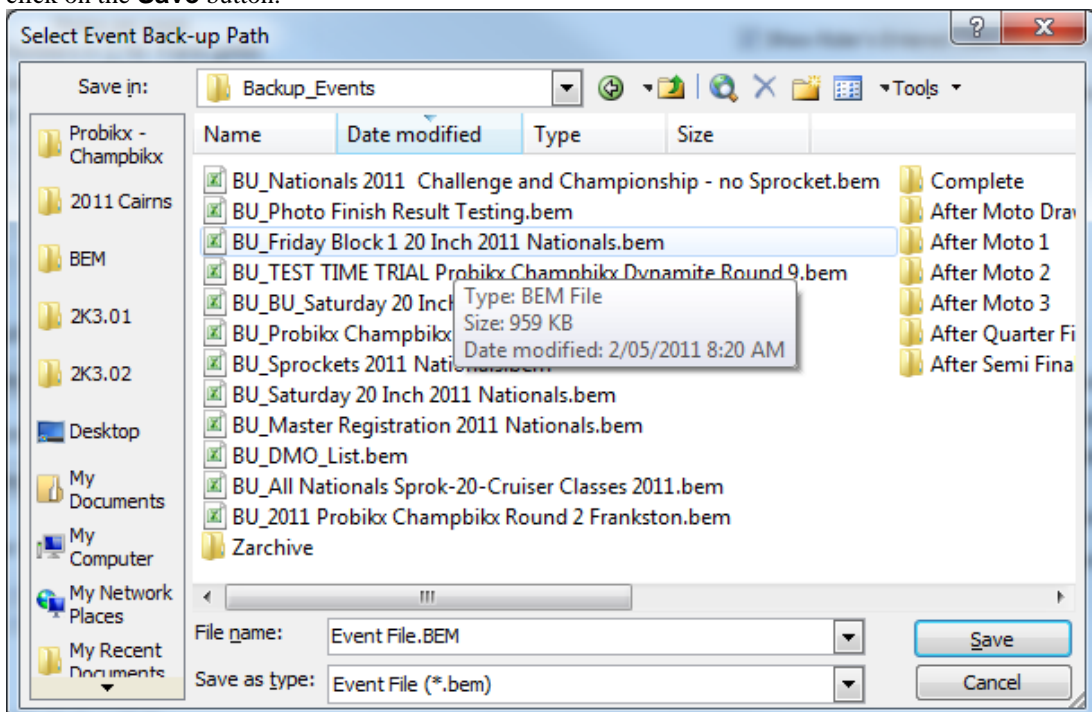
Note that the first time the BEM program is run as a first installation, the Event Files and Passing Files back-up paths may not be set or not valid and the following reminder message will be received.

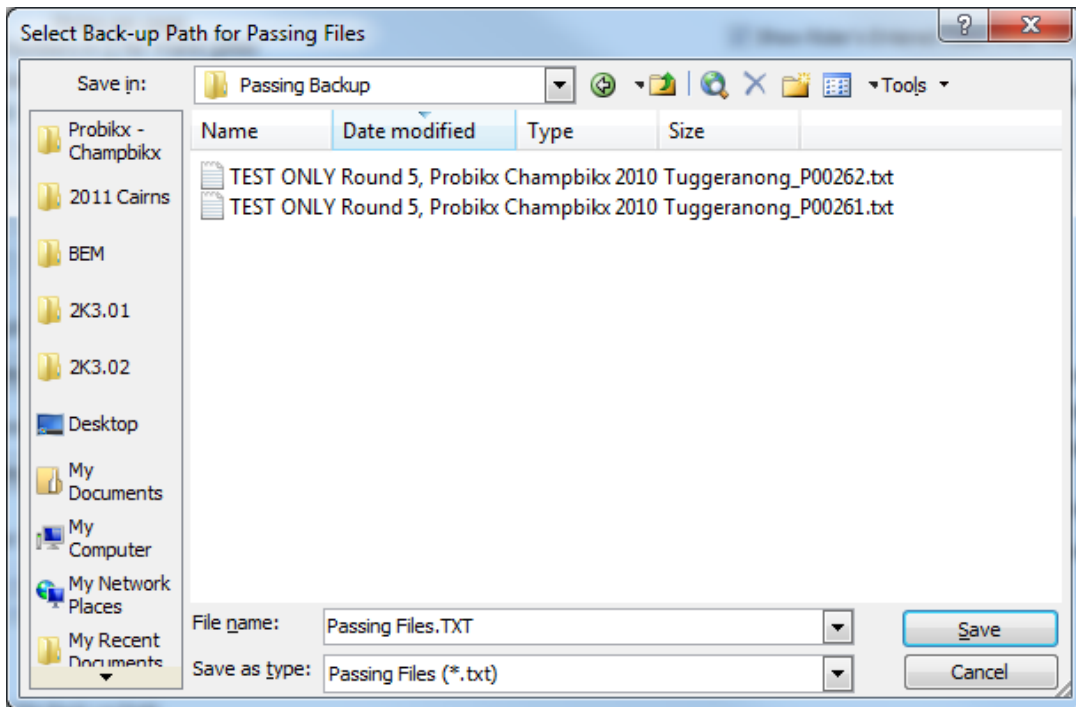


Note that the **Event File Back-up Path** and **Passing Files Back-up Path** are blank and need to be set.

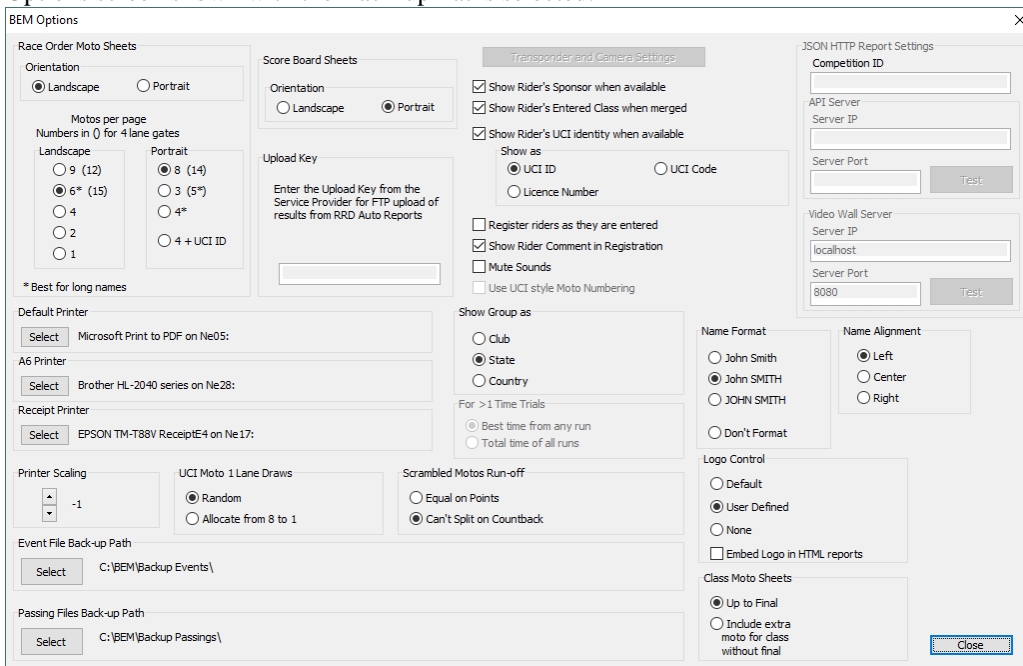


If you recoded the settings from an earlier version BEM installation restore those settings now. To select the paths, click on respective **Select** button, navigate to the required back up folder and then click on the **Save** button.





Options screen shown with the Back-up Paths selected.



Once the Event File Back-up and Passing File Back-up paths are selected and the Scrambled Motos Run-off setting is made you can close the options screen and select an Event File.

Earlier Releases.

10.21.8 to 10.22.0

BEM

- Update for compliance with UCI BMX 2022 rules.
- Update for compliance with AusCycling BMX 2022 rules.
- Correct the import of lap times in Orbits results format where the decimal part of the time is other than 3 digits.
- Updated event database in preparation for the AusCycling Advanced Rider feature.

RRD

- Correction to an omission in earlier builds to the generic category selection user-form which could result in a program error with some operator generated reports from the Report Menu.
- Removes unexpected and unwanted operator warning for a class with 0 entries when Event Level Time Trial Draws and Results is selected.

SERIES

- Alignment with BEM feature changes.

10.21.5 to 10.21.8

BEM

- Alignment with applicable BEM 11 stream updates, noting that Pump Track and MTB Enduro features are exclusive to the BEM 11 stream.
- Reduce the minimum lap time setting to cater for loop start runs where multiple loops are connected to the one decoder.
- Update the database structure and Class Types in preparation for the AusCycling Advanced Rider classification.
- Update for the MyLaps Smart Decoder to allow for Start Gate transponder specifications when importing records from Timing and Scoring to use the same convention as with the MyLaps desktop decoders. I.e. 00-09991, 00-09992 00-09993
- Provide a new report display option to show the rider's Licence Number as an alternative to the existing UCI ID or UCI Code.

The screenshot shows the 'BEM Options' dialog box with several sections. The 'Race Order Moto Sheets' section has 'Landscape' selected. The 'Score Board Sheets' section has 'Portrait' selected. The 'Transponder and Camera Settings' section has 'Show Rider's UCI identity when available' checked, with 'Licence Number' selected under 'Show as'. Other options include 'Show Rider's Sponsor when available', 'Show Rider's Entered Class when merged', 'Register riders as they are entered', 'Show Rider Comment in Registration', 'Mute Sounds', and 'Use UCI style Moto Numbering'. The 'Default Printer' is 'FX DocuPrint M225 z on Ne10'. The 'A6 Printer' is 'Brother HL-2040 series on Ne28'. The 'Receipt Printer' is 'EPSON TM-T88V ReceiptE4 on Ne17'. The 'Printer Scaling' is set to '-1'. The 'UCI Moto 1 Lane Draws' section has 'Random' selected. The 'Scrambled Moto Run-off' section has 'Can't Split on Countback' selected. The 'Event File Back-up Path' is 'C:\BEM\Backup Events\'. The 'Passing Files Back-up Path' is 'C:\BEM\Backup Passings\'. The 'Name Format' section has 'John SMITH' selected. The 'Name Alignment' section has 'Left' selected. The 'Logo Control' section has 'User Defined' selected. The 'Class Moto Sheets' section has 'Up to Final' selected.

- Minor change of print time format in reports to avoid conflicts with regional and non-English configurations.

RRD

- Alignment with applicable BEM 11 stream updates, noting that Pump Track and MTB Enduro features are exclusive to the BEM 11 stream.
- Provide a new report display option to show the rider's Licence Number as an alternative to the existing UCI ID or UCI Code.

BEM Options

Race Order Moto Sheets
Orientation
 Landscape Portrait

Motos per page
Numbers in () for 4 lane gates
Landscape
 9 (12)
 6* (15)
 4
 2
 1
Portrait
 8 (14)
 3 (5)
 4*
 4 + UCI ID

* Best for long names

Printer Scaling
-1

Show Group as
 Club
 State
 Country

Show Rider's Sponsor when available
 Show Rider's Entered Class when merged
 Show Rider's UCI identity when available
Show as
 UCI ID
 UCI Code
 Licence Number
 Use UCI style Moto Numbering

Logo Control
Logos not recommended for auto-upload HTML reports
 Default
 User Defined
 None
 Embed Logo in HTML reports

SERIES

- Alignment with applicable BEM 11 stream updates, noting that Pump Track and MTB Enduro features are exclusive to the BEM 11 stream.
- Provide a new report display option to show the rider's Licence Number as an alternative to the existing UCI ID or UCI Code.

BEM Series and Team Report Generator Options: Campeonato Gaúcho de BMX 2020

Do not re-build the Series on opening. (Use this option with caution)

Rider Matching Criteria across Series Events
 Licence + First Name + Last Name
 Licence + Last Name

Series Qualification
Criteria for Series qualification rounds
 Enter and Compete in the round
 Enter only

Tie-Break Options
 No tie break
 Use Placings in Finals - All Rounds. (UCI Rules)
 Count back on series points from last to first round
 Count back on series points from highest to lowest applicable round
 Count back on series points from highest to lowest applicable round plus Rider Ranking

Auto Sanity Check before every calculation

Show Group in Report Options
 Club
 Club + State
 Club + Country
 Club + State + Country
 State
 State + Country
 Country

Printer Scaling
0

Show Rider's Sponsor when available
 Show Rider's UCI identity when available
Show as
 UCI ID
 UCI Code
 Licence Number
 Use UCI style Moto Numbering

Logo Control
Logos not recommended for auto-upload HTML reports
 Default
 User Defined
 None
 Embed Logo in HTML reports

Operating System Requirements

The recommended PC environment is:

Operating System: 32 or 64 bit versions of Windows XP, Vista (OK but best avoided if possible), Windows 7 and for Windows 8 & 8.1 and Windows 10, full versions, not the RT tablet versions.

If you are using BEM in a networked environment to run transponder timing or the RRD program, use of the Professional rather than the Home versions of Windows are strongly recommended.

Microsoft Office: Office 2010 (recommended), Office 2007 or Office 2003.

Note that BEM does not run on Office 2013, 2016 or Office 365 as Microsoft have not maintained full backwards compatibility with Office 2010, 2007 and 2003 versions.

For new PCs that come pre-installed with an Office version later than 2010, the following options are suggested.

1. If you don't have a specific requirement for the new facilities in the pre-installed version Office and haven't paid the licence fee for that:
 - a. Totally remove Office from the PC.
 - b. Buy and install a legitimate version of Office 2010 from eBay or from a download retailer such as https://www.ecrater.com.au/p/30522352/microsoft-office-2010-pro-plus-32-64-bit?gps=1&id=115926669379&keywords=&gclid=CjwKCAjwm4rqBRBUEiwAwaWjjK60coZew2EOxi9W_eodOHFfGc8FKc4vya1IbS3VT41eix1YEFxqnBoCRJgQAvD_BwE
or
https://theunitysoft.com/product/office2010proplus/?gclid=EAiaIQobChMI07_I7NXN4AIVGK6WCh2pWwWhEAYYBCABEgJcpvD_BwE

Typically a legitimate licence is available for around \$10 - \$30, significantly cheaper than the Office 365 / 2016 licence that Microsoft would like you to purchase.

2. If you need to keep the pre-installed Office version on the PC with either Win7, Win8 or Win 10.
 - a. Do a partial installation of Office 2010 installing only Excel 2010 which will happily co-exists with later Office versions.
 - b. To get BEM to open with Office 2010 when you also have later Office versions installed then either:
 - i. Open Excel 2010 before clicking on the BEM icon.
 - ii. Set up your own shortcuts to BEM, RRD, Series and Toolbox that direct to Office 2010. Note that in some PCs, particularly non-english language versions of Windows, the path to Office14 Excel may be different to this example.

Typical Shortcut Target when Office is a 32bit installation

BEM

"C:\Program Files (x86)\Microsoft Office\Office14\EXCEL.EXE" "C:\BEM\Programs\Event\3.10.x\Bem2K3.xls"

RRD

"C:\Program Files (x86)\Microsoft Office\Office14\EXCEL.EXE" "C:\BEM\Programs\Report\3.10.x\Rrd2K3.xls"

Series

"C:\Program Files (x86)\Microsoft Office\Office14\EXCEL.EXE" "C:\BEM\Programs\Event\3.10.x\Series2K3.xls"

Toolbox

"C:\Program Files (x86)\Microsoft Office\Office14\EXCEL.EXE" "C:\BEM\Programs\Toolbox\BEM_Toolbox3.xls"

Typical Shortcut Target when Office is a 64bit installation

BEM

"C:\Program Files\Microsoft Office\Office14\EXCEL.EXE" "C:\BEM\Programs\Event\3.10.x\Bem2K3.xls"

RRD

"C:\Program Files\Microsoft Office\Office14\EXCEL.EXE" "C:\BEM\Programs\Report\3.10.x\Rrd2K3.xls"

Series

"C:\Program Files\Microsoft Office\Office14\EXCEL.EXE" "C:\BEM\Programs\Event\3.10.x\Series2K3.xls"

Toolbox

"C:\Program Files\Microsoft Office\Office14\EXCEL.EXE" "C:\BEM\Programs\Toolbox\BEM_Toolbox3.xls"

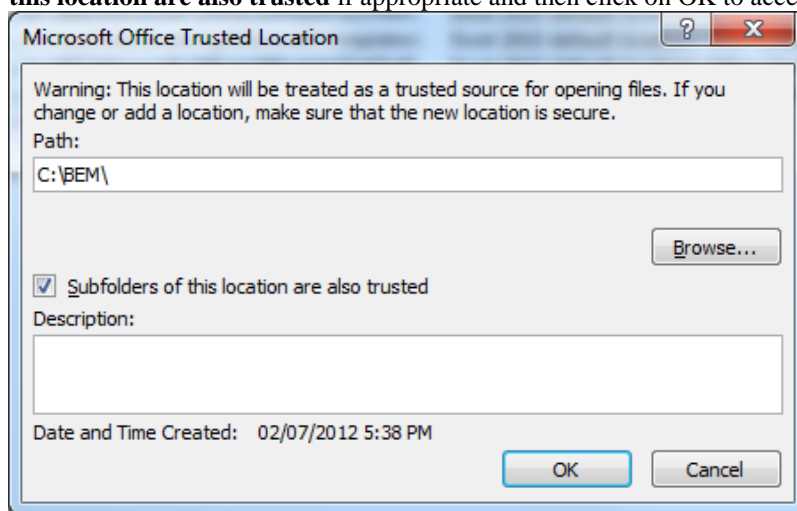
To add these shortcuts to the start menu, copy and paste or create the shortcuts in the following 'Hidden' folder:

C:\Users\username\AppData\Roaming\Microsoft\Windows\Start Menu\Programs

Now open Start Menu > All apps and locate the shortcut(s) you placed. Right-click on it and select Pin to Start.

The following preparatory actions if not already implemented from earlier releases of BEM will avoid compatibility problems.

1. Download and install the latest applicable Office 2003 / 2007 / 2010 service packs and updates. This is very important as there is a history of unpredictable operation should the latest Microsoft updates not be installed.
2. For users running Office 2007 and Office 2010.
 - 2.1. Include the C:\BEM path and any other locations where you save BEM files in the list of Excel Trusted Locations.
Method:
 - 2.1.1. Open Excel.
 - 2.1.2. Select **File** then **Options**.
 - 2.1.3. Select **Trust Center**.
 - 2.1.4. Click on **Trust Center Settings...** button.
 - 2.1.5. Click on **Add new location...** button and add any required paths and select the **Subfolders of this location are also trusted** if appropriate and then click on **OK** to accept and close the dialog



- 2.1.6. . • Click on **OK** to close each of the dialogs until back in Excel which now can be closed.